



# WORKTOPS

FOR KITCHENS AND BATHROOMS







**WORKTOPS**  
FOR KITCHENS AND BATHROOMS





# WORKTOPS

FOR KITCHENS AND BATHROOMS





## WELCOME TO DESK-FORM

The DESK-FORM joint-stock company is a leading European manufacturer of made-to-measure kitchen and other worktops. We have unique technology for gluing sinks to the underside of a worktop, making the worktop easy to clean and imparting it with an exclusive appearance. The company also manufactures tables and other accessories according to the specific requirements of customers.

We supply our products to customers all over Europe, who expect the latest trends and who appreciate our determination to always remain one step ahead. We consider kitchens and bathrooms to be two of the most important places in your home. We emphasise quality and design. We are aware of the fact that a worktop is the dominant feature of your kitchen.

We offer our customers a broad range of materials, including laminates, solid wood, acrylate, compact laminate, engineered stone, natural stone, and ceramics. We have an installation team and our own means of transport, and our technicians measure and install directly in your home. With this offer, we are able to make any of our customers' visions come true. We also provide excellent customer care and sales support.

We meet the most stringent quality criteria and are certified under FSC.

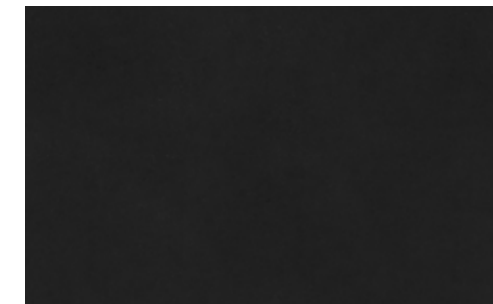
The configurator and contact form available at [www.deskform.com](http://www.deskform.com) ensure that



Laminate



Solid wood



Compact laminate



Acrylate



Engineered stone



Natural stone



Ceramics



Sinks and washbasins



# LAMINATE





## Laminate kitchen worktops

Laminate is a material commonly used for kitchen worktops with a relatively high resistance to abrasion. We offer a wide range of patterns and colours.

**Composition:** This material is composed of multiple layers of decorative contact paper interspersed with resin then compressed under high pressure (so-called high-pressure laminate).

**Advantages:** Our laminate worktops are fitted with a laminate front edge, as well as a rounded underside for insulation against steam (e.g. from a dishwasher). The laminate layer is at least 0.7 mm, providing a durable surface crucial for successfully gluing the sink to the underside of the worktop.

Laminate worktops are available in the following sizes:


*Width: 50-1250 mm*

*Length: 150-4000 mm*

Measurement and installation of kitchen worktops:

- precise measurement of worktops and back panels
- delivery to the place of installation
- professional installation






**White Super matt** - 4771  
deluxe, 38mm



**White** - 0103-CR - standard  
38mm, *back panel 16mm*




**Arctic White** - 0179-XX - deluxe  
38mm, **REMMANT SALE**



**White HG** - 1104-HG - deluxe  
28mm, 38mm, *back panel 16mm*




**White snow** - 4974-CR - standard  
28mm, 38mm, *back panel 16mm*  
**REMMANT SALE**



**Granite White** - 0483-SK  
standard, 38mm




**White stone eff.** 5285-CR - standard  
38mm, *back panel 16mm*



**Light grey** - 6080-CR - standard  
28mm, *back panel 16mm*



**Aluminium Effect** - 0225-HP standard  
38mm, *back panel 16mm*



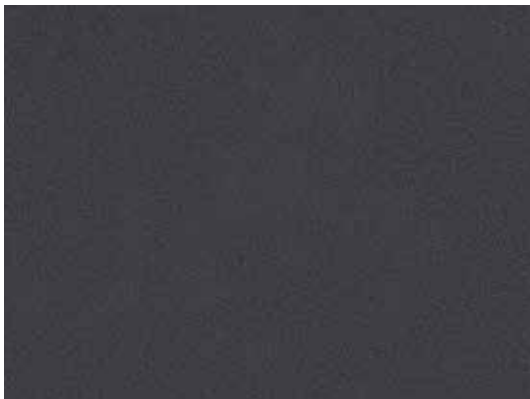
**Light Grey Stone Effect** - 6405-CR  
standard, 28mm, *back panel 16mm*



**Dark Grey** - 0137-CR - standard  
28mm, *back panel 16mm*  
**REMMANT SALE**



**Dark grey eff linen** - 0140-CR  
standard, 28mm,  
*back panel 16mm*



**Stone Effect Black** - 0204-CR  
standard, 28mm, 38mm,  
*back panel 16mm*, **REMMANT SALE**



**Mineral Effect Black** - 0300-CR  
standard, 38mm,  
*back panel 16mm*



**Black marble eff.** - 6402-CR  
standard, 38mm, *back panel 16mm*

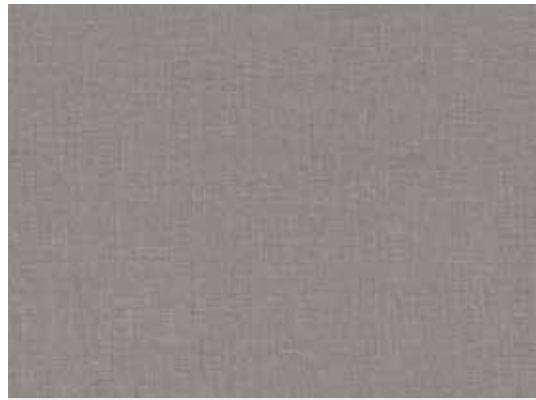




**White Marble Effect** - 6401-CR  
standard, 28mm,  
*back panel 16mm*



**Granitic Vein** - 3540-L2  
deluxe, 38mm



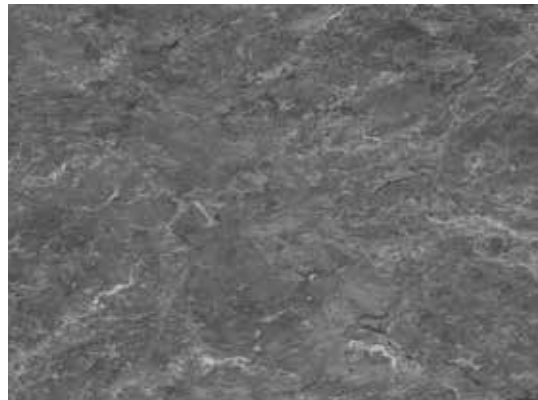
**Linen** - 3660-AJ  
deluxe, 38mm, **REMMANT SALE**



**Concrete** - 3515-EM  
deluxe, 38mm, **REMMANT SALE**



**Black Granite** - 3344-60  
standard, 38mm, **REMMANT SALE**



**Avalon** - 3477-60  
standard, 38mm



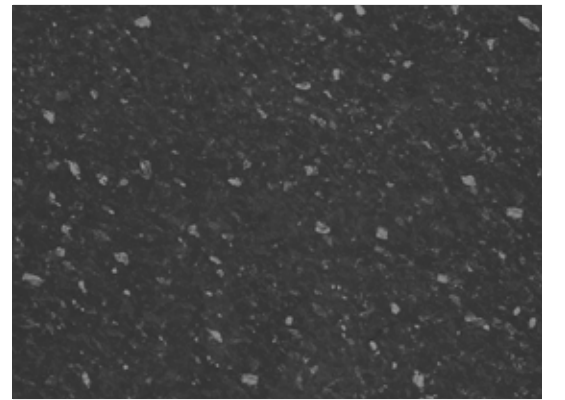
**Tagus Slate** - 3490-XX  
deluxe, 38mm



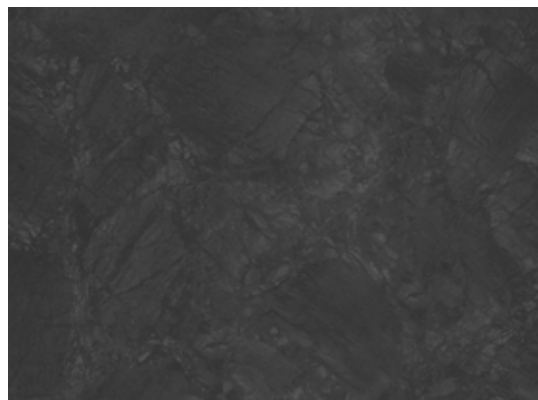
**Concrete Effect** - 6404-LU  
standard, 28mm, *back panel 16mm*



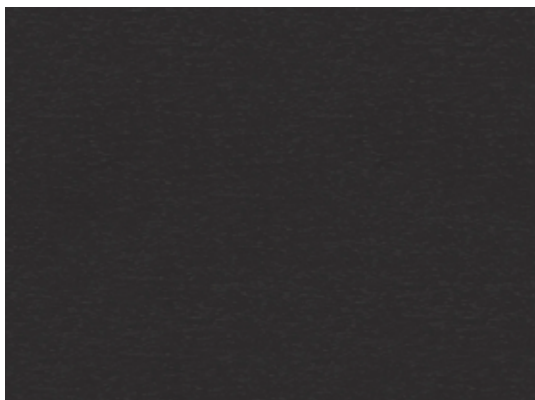
**Grey Pieta Marble** - K026  
deluxe, 38mm



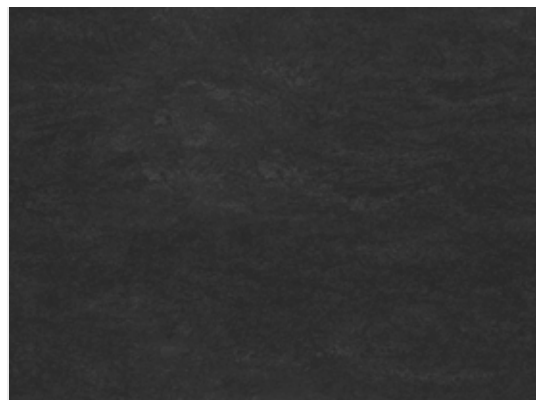
**Everest** - 0518-CR  
standard, 38mm



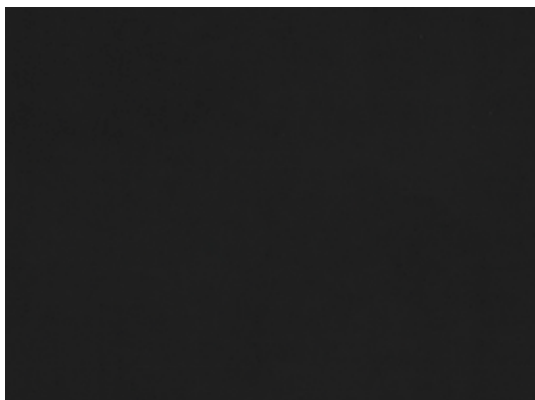
**Raje Black** - 3505-XX  
deluxe, 38mm



**Brown Black** - 6034-FP  
standard, 28mm, *back panel 16mm*  
**REMMANT SALE**



**Black Brazil** - 0210-CR  
standard, 38mm



**Black** - 0276-CR - standard  
28mm, 38mm,



**Black Super matt** - 190ASM  
deluxe, 38mm,





**Quabec Oak** - 4312-WH  
deluxe, 38mm



**Ash eff** - 7400-WO  
standard, 28mm,  
*back panel 16mm*



**Wood 5442-WO**  
standard, 38mm



**Light Oak Effect** - 6406-WO  
standard, 28mm,  
*back panel 16mm*



**Calgary Oak** - 4384-EM  
deluxe, 38mm



**Light Walnut Effect** - 7373-CR  
standard, 38mm,  
*back panel 16mm*



**Dark Oak Effect** - 6403-  
WO



**Walnut-** 4447 EM  
deluxe, 38mm



**Block Board Nero** - 4395-60  
standard, 38mm



**Walnut Effect** - 0712-FP  
standard, 38mm,  
*back panel 16mm*



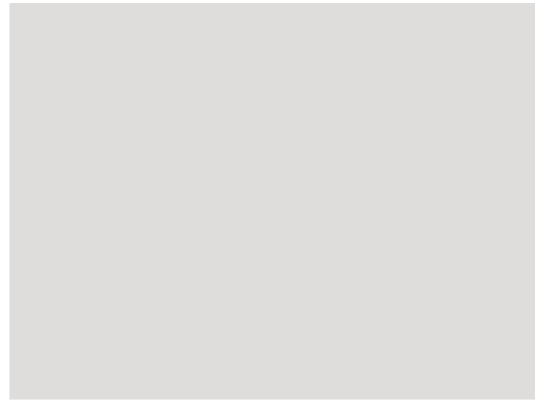
**Black Forest Oak** - 4180-HW  
deluxe, 38mm



**Mid Grey matt** - D95 TP  
standard, 38mm



**Carbonated wood** - K016-SU  
deluxe, 38mm



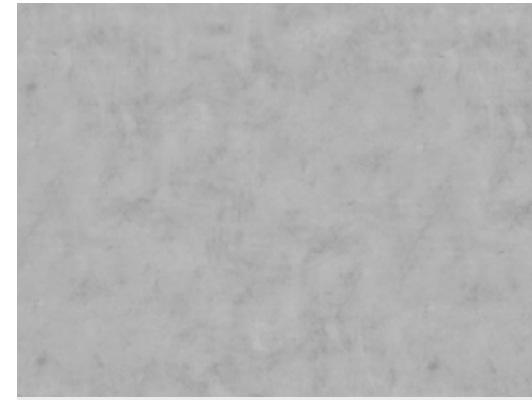
**Light Grey matt** - 0164 TP  
standard, 38mm



**White Marble** - K023 SU  
deluxe, 38mm



**Industrial Concrete** - K028 SU  
deluxe, 38mm



**Light Grey Concrete Effect** - 6407  
standard, 38mm



**Black Super matt** - 0190  
38mm



**Beige Pieta Marble** - K024 SU  
deluxe, 38mm



**Rust** - 2493 KS  
deluxe, 38mm



**Gold Ore** - 4603 RM  
deluxe, 38mm



**Silver Ore** - 4604 RM  
deluxe, 38mm



**Concrete** - 0293-CR  
standard, 38mm

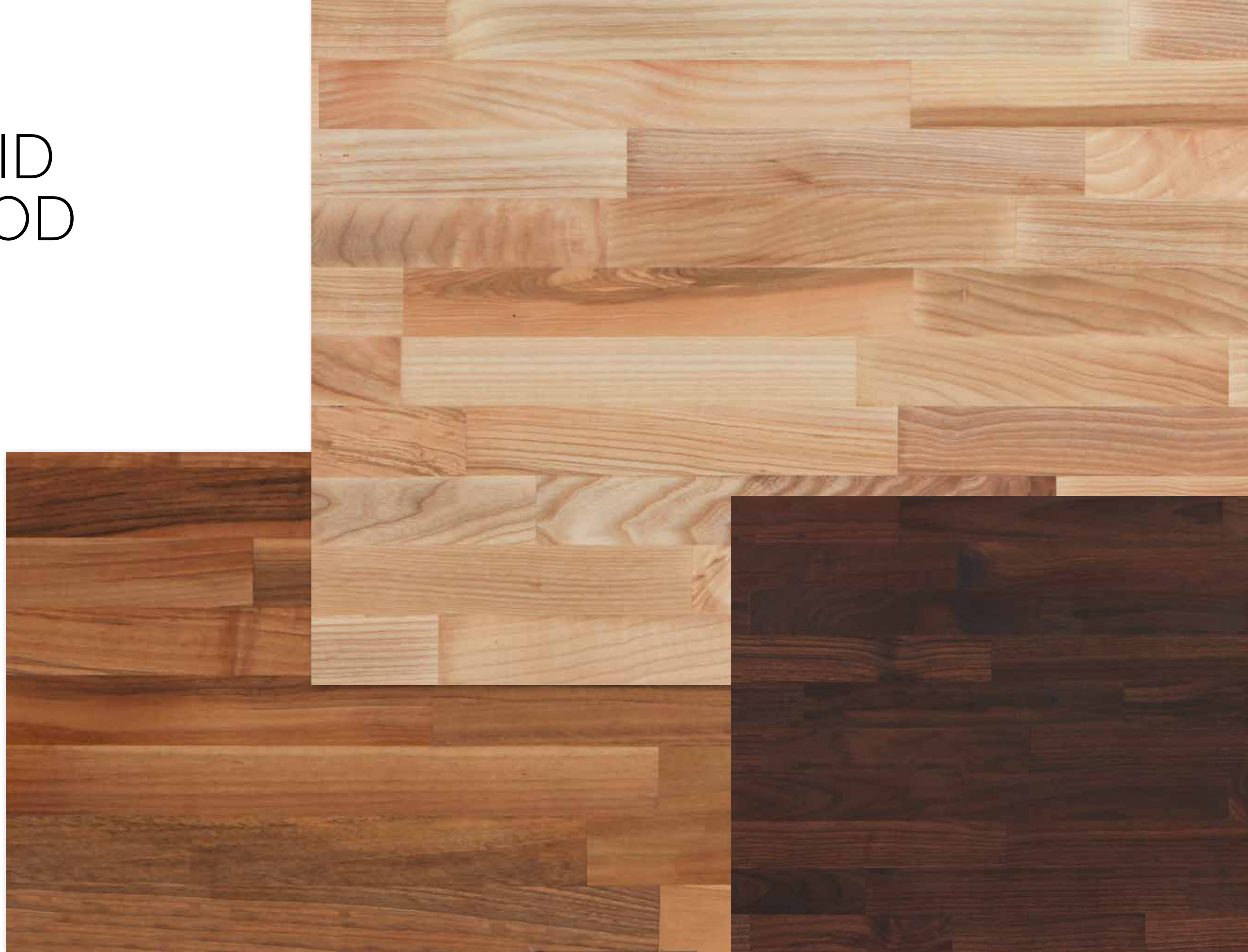




 **DESK**<sup>®</sup>  
F O R M  
kitchen worktops



SOLID  
WOOD







## Solid wood kitchen worktops

A natural material made by gluing 40 mm strips of wood with a natural, water-resistant adhesive. We supply solid wood worktops sanded and treated on both sides with oil to protect them against moisture. We hold an FSC certificate, which guarantees that the wood originates from forests that are managed in a considerate and environmentally-friendly manner.

Every order includes a mounting kit containing: angles, screws, aluminium tape, sanding pad, and maintenance oil. If the order contains a joint, the mounting kit also includes connecting hardware, strips, key, and adhesive.

The price of a worktop always includes surface treatment with cold-pressed linseed oil. It is also possible to order surface treatment with oil wax or oil wax containing a hardener.

Solid wood worktops are available in the following sizes:

*Width: 50-1250 mm*

*Length: 150-4000 mm*

*Maximum dimensions of back panel: 4000 mm × 700 mm*

Measurement and installation of kitchen worktops:

- precise measurement of worktops and back panels
- delivery to the place of installation
- professional installation

## Surface treatment of solid wood worktops

To ensure that wood meets the stringent requirements imposed on a kitchen worktop, its surface should be suitably treated to ensure that it is moisture-proof. Today, both waxing and oiling are common surface treatment methods. They lend an original appearance to the worktop and protect the wood from external effects, i.e. excessive drying and sagging, while maintaining its colour.

We offer our customers four treatment options, each with its specific characteristics.



Oak Linseed Oil

### Cold-pressed linseed oil

- included with worktops with no surface treatment
- uniform semi-gloss surface finish



Oak Oil Wax

### Oil wax

- uniform semi-gloss surface finish
- highlights the wood structure, preserving the character of the wood



Oak White Oil Wax

### White oil wax

- highlights the wood structure but with a lighter effect
- increased resistance to water and staining
- long-term surface treatment
- easy maintenance and repairs



OSMO Oak Oil Wax

### OSMO Oil Wax with Hardener

- silky-matte surface finish
- highlights the wood structure, preserving the character of the wood
- high physical and chemical resistance
- long-lasting and easy to maintain
- based on natural oils and waxes



Birch Oil Wax  
40mm, 80mm,  
**back panel 18mm**



Birch Linseed Oil  
40mm, 80mm,  
**back panel 18mm**



Birch Oil Wax with Hardener  
40mm, 80mm,  
**back panel 18mm**



Beech Oil Wax  
40mm, 80mm,  
**back panel 18mm**



Beech Linseed Oil  
40mm, 80mm,  
**back panel 18mm**



Beech Oil Wax with Hardener  
40mm, 80mm,  
**back panel 18mm**



Ash Linseed Oil  
40mm, 80mm,  
**back panel 18mm**



Ash Oil Wax  
40mm, 80mm,  
**back panel 18mm**



Ash Oil Wax with Hardener  
40mm, 80mm,  
**back panel 18mm**



Oak Oil Wax  
30mm, 40mm, 60mm, 80mm,  
**back panel 18mm**



Oak Oil Wax with Hardener  
30mm, 40mm, 60mm, 80mm,  
**back panel 18mm**



Oak Linseed Oil  
30mm, 40mm, 60mm, 80mm,  
**back panel 18mm**



Oak White Oil Wax  
30mm, 40mm, 60mm, 80mm,  
**back panel 18mm**





European Walnut Wax Oil  
40mm, 80mm,  
**back panel 18mm**



EU European Walnut Wax Oil with  
Hardener  
40mm, 80mm,



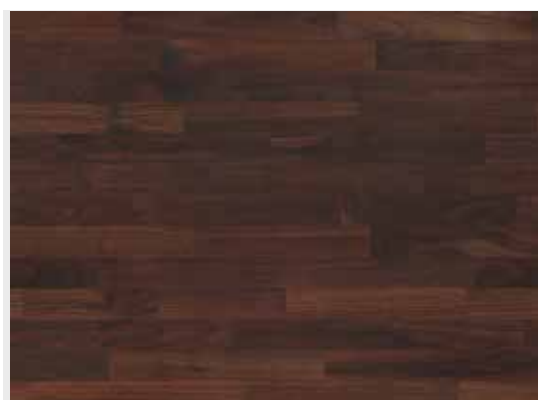
EU European Walnut Linseed Oil  
40mm, 80mm,  
**back panel 18mm**



AM American Walnut Wax Oil with  
Hardener 40mm, 80mm,  
**back panel 18mm**



AM American Walnut Wax Oil  
40mm, 80mm,  
**back panel 18mm**



AM American Walnut Linseed Oil  
40mm, 80mm,  
**back panel 18mm**



Dub černý mořený  
Olejovosk s tvrdidlem  
40mm

# COMPACT LAMINATE





## Compact-laminate kitchen worktops

A waterproof material that meets the highest requirements for hygiene and service life with a broad range of applications.

Composition: 12 mm material pressed from a large quantity of decorative and contact papers that are interspersed with resin and compressed under high pressure.

We offer the option to increase the thickness of the worktop to 40 mm using chipboard that can be edged according to the customer's requirements. Compact laminate can be used for applications where the look of a thin elegant worktop is desired, as well as for bathroom furniture. This material has become very popular with interior designers and architects.

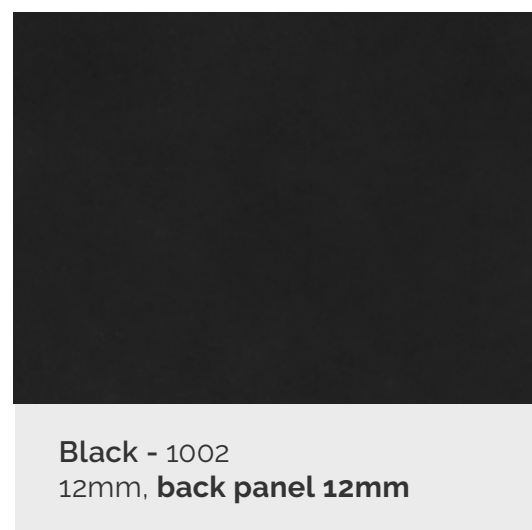
Compact-laminate worktops are available in the following sizes:

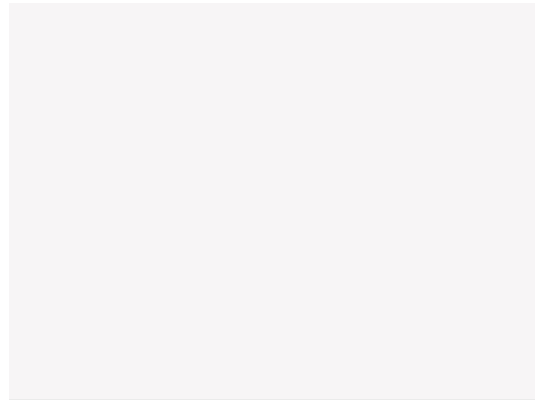
*Width: 50–1250 mm*

*Length: 150–3600 mm*

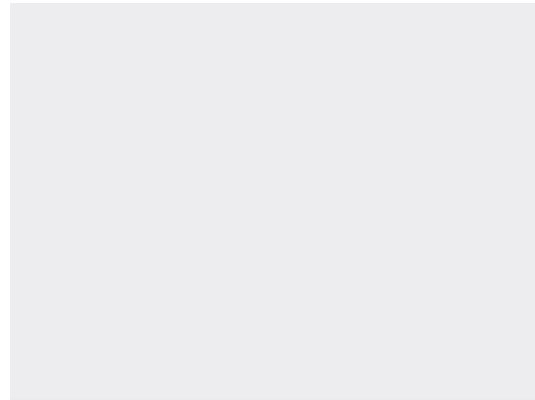
Measurement and installation of kitchen worktops:

- precise measurement of worktops and back panels
- delivery to the place of installation
- professional installation





Blanc absolu beihg  
12mm, **back panel 12mm**



Noir absolu roche  
12mm, **back panel 12mm**



Chene topia linimat  
12mm, **back panel 12mm**



Elina Cendre  
12mm, **back panel 12mm**



Noir absolu roche  
12mm, **back panel 12mm**



Pierre de lava roche  
12mm, **back panel 12mm**



Rouille granit  
12mm, **back panel 12mm**



Noir sideral touch  
12mm, **back panel 12mm**



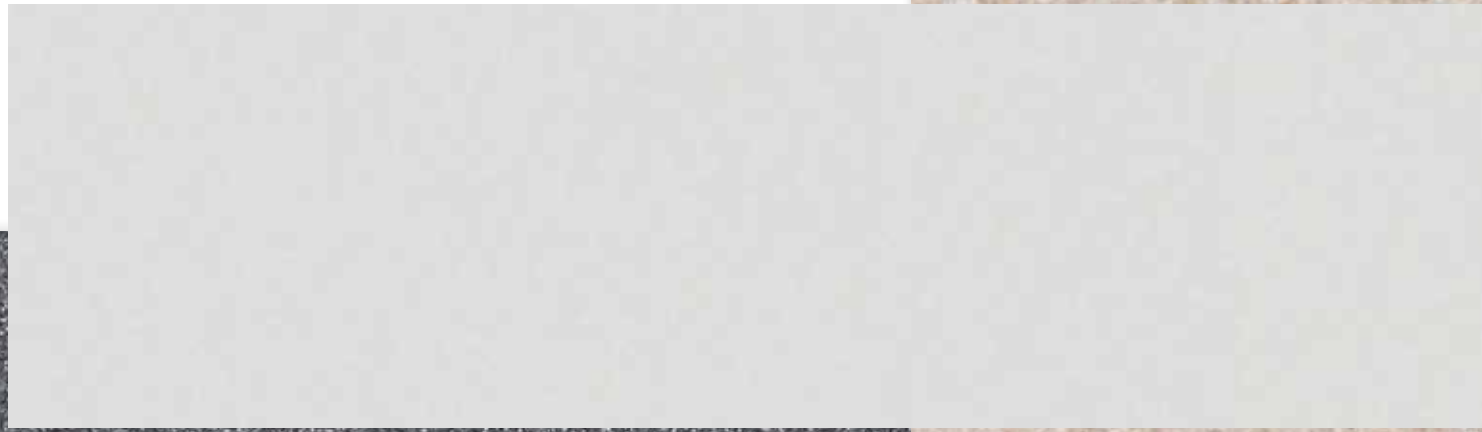
**DESK**<sup>®</sup>  
F O R M

kitchen worktops





ACRYLATE





# Acrylic kitchen worktops

Thanks to its excellent properties and its ability to be shaped, acrylic offers wide options to designers and architects. A back panel and sink can be made from the same material as the worktop to intensify a design appearance. It is also suitable for bathroom and laboratory environments as well as other public spaces.

Composition: A mixture of minerals, acrylate, and colour pigments.

Advantages: Acrylate is a material with the hardness of a stone worktop but that gives a velvety smooth and warm tactile sensation. It meets the highest requirements for hygiene and is waterproof.

After installation, the joints are not visible and the worktop looks like one unbroken unit, including the sink. It has unlimited shape options.

Easily and seamlessly repaired in the event of serious damage.

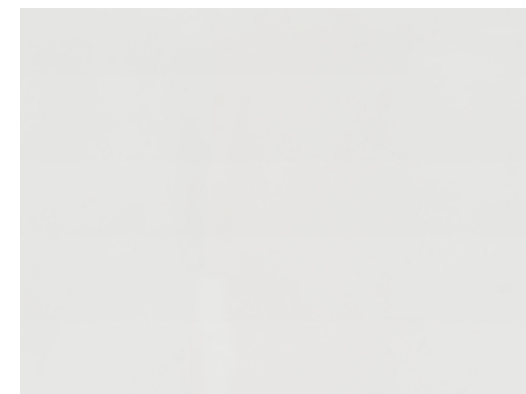
Kitchen worktops made of Acryl are available in the following sizes:

*Width: 50–1225 mm*

*Length: 150–3000 mm*

Measurement and installation of kitchen worktops:

- precise measurement of worktops and back panels
- delivery to the place of installation
- professional installation



**Avonite White** - F1-8016  
12mm to 100mm, *back panel 12mm*



**Avonite Kokoura** - F1-9117  
12 to 100mm, *back panel 12mm*



**Avonite Cairo** - F1-9130  
12 to 100mm, *back panel 12mm*



**Avonite Nordic** - F1-9119  
12 až 100mm, *back panel 12mm*



**Avonite Black Lava** - F1-9020  
12 až 100mm, *back panel 12mm*  
**REMMANT SALE**

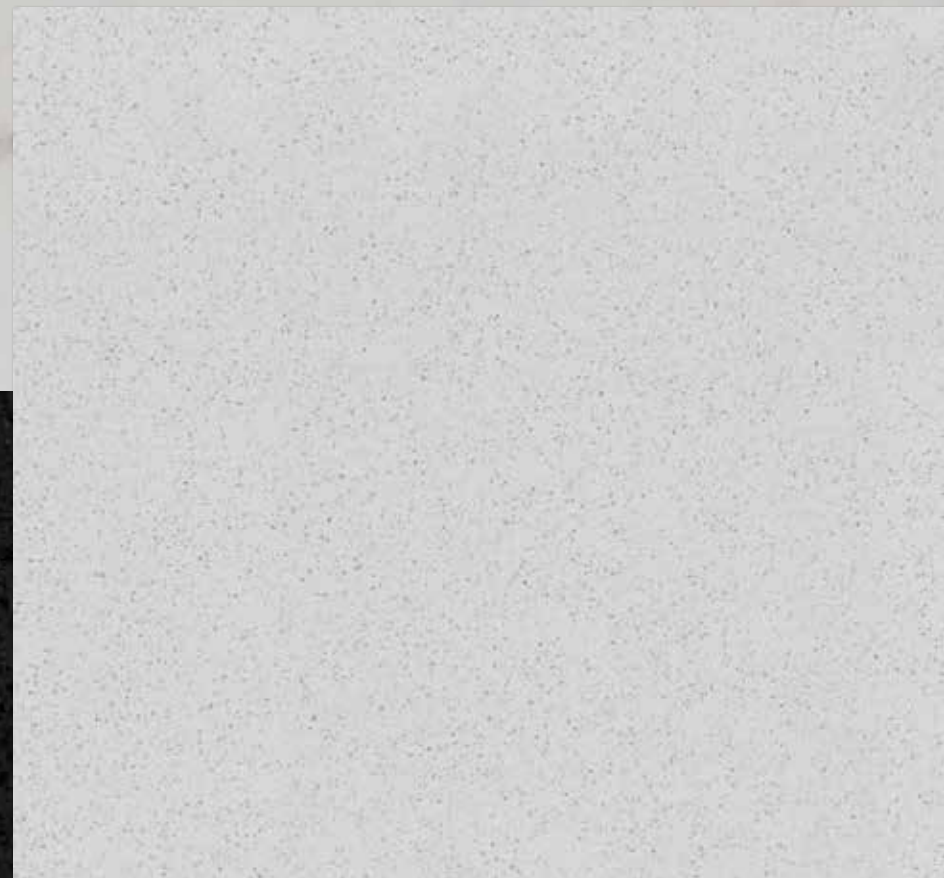


**DESK**<sup>®</sup>  
F O R M

kitchen worktops



# ENGINEERED STONE



# Quartz kitchen worktops

This conglomerated material or engineered stone is a top-quality material developed specially for exacting conditions both indoors and outdoors.

Composition: Engineered stone is produced by mixing pigments, sand, and resin in a specific ratio.

As a rule, the ratio is 95% natural aggregates and sand to 5% resin. During production, the mass is then compressed under high pressure and high temperature. Thanks to this technology, the material has excellent technical properties:

- resistance to physical damage, chemicals, acids, and abrasion.

A sink from our offer can be glued to the underside of all our quartz worktops or glued so that they are flush.



Advantages:

- exclusive appearance
- polished surface
- great hardness and strength
- resistant to liquids and mechanical damage
- made-to-measure worktops
- long service life

Granite kitchen worktops are available in the following sizes:

*Width: 50-1225 mm*

*Length: 150-3000 mm*

Measurement and installation of kitchen worktops:

- precise measurement of worktops and back panels
- delivery to the place of installation
- professional installation



**Marguina - QS-304**  
20mm, 40mm, back panel **12mm**

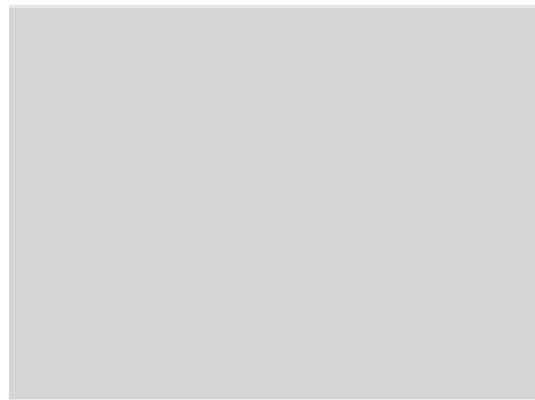


**Noble Carrara - QS-006**  
20mm, 40mm, back panel **12mm**





**Calcata Gold - QS-301**  
20mm, 40mm, *back panel 12mm*



**ABSOLUTE White - QS-202**  
20mm, 40mm, *back panel 12mm*



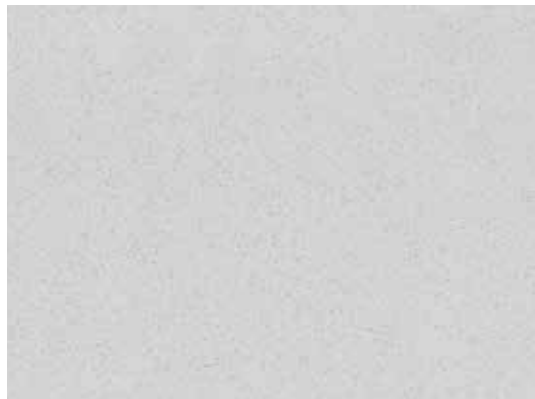
**Crystal Nevada - QS-001**  
20mm, 40mm, *back panel 12mm*



**Lagoon - lesk- QS-308**  
30mm, 12mm



**Statutario - lesk - QS-310**  
30mm, 12mm



**Crystal Quartz White - QS-002**  
20mm, 40mm, *back panel 12mm*



**V Michelangelo - QS-201**  
20mm, 40mm, *back panel 12mm*



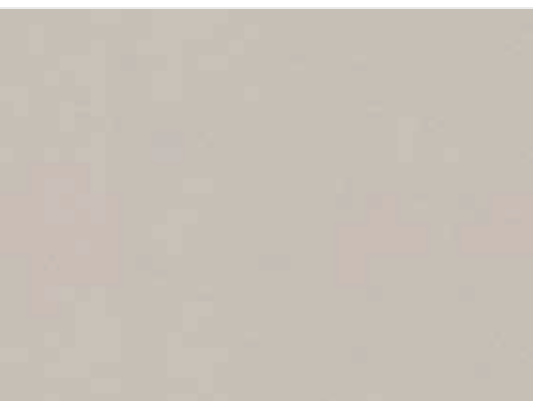
**Serena - QS-303**  
20mm, 40mm, *back panel 12mm*



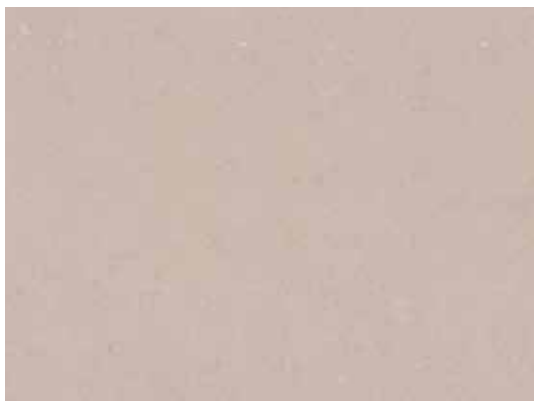
**Blanco Stellar 13 - lesk - QS-309**  
30mm, 12mm



**Harmonia Yosemite - QS-003**  
20mm, 40mm, *back panel 12mm*



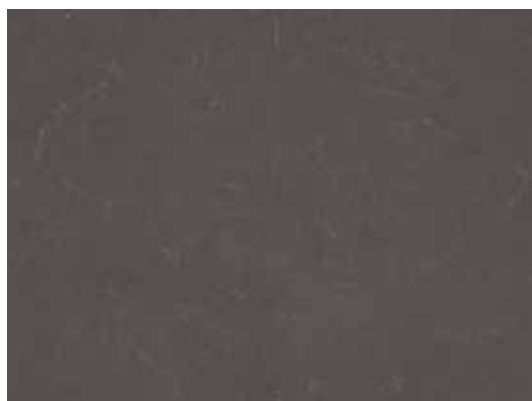
**Crystal Royal - QS-007**  
20mm, 40mm, *back panel 12mm*



**Coral Clay - mat - QS-307**  
30mm, 12mm



**Gobi Grey - QS-009**  
20mm, 40mm, *back panel 12mm*



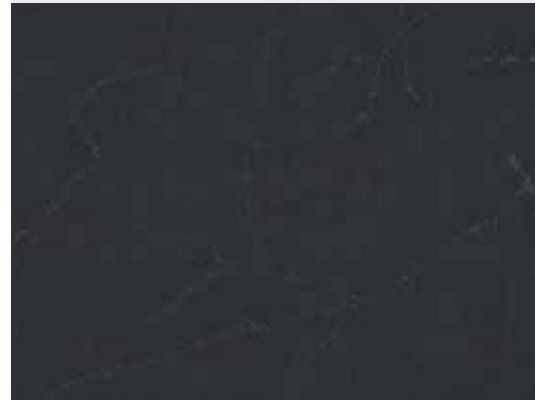
**SUE CALYPSO JUM - QS-203**  
20mm, 40mm, *back panel 12mm*



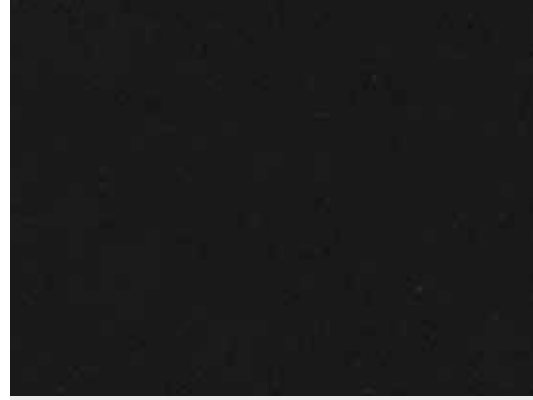
**Arden Blue - lesk - QS-305**  
30mm, 12mm



**Crystal Anthracite - QS-010**  
20mm, 40mm, *back panel 12mm*



**Charcoal Soapstone - QS-302**  
20mm, 40mm, *back panel 12mm*



**Taurus Black - QS-008**  
20mm, 40mm, *back panel 12mm*



**Gobi Black - QS-101**  
20mm, 40mm, *back panel 12mm*



**Starlight Black - QS-102**  
20mm, 40mm, *back panel 12mm*







# NATURAL STONE







## Granite kitchen worktops

Granite worktops are made of a beautiful natural material that withstands ordinary use in the kitchen.

In addition, they are very easy to maintain. It is a natural material featuring high strength and hardness. Thanks to its polished surface, a worktop made of natural stone has a very exclusive appearance.

A sink from our offer can be glued to the underside of all our granite worktops or glued so that they are flush.

Advantages:

- exclusive appearance
- polished surface
- great hardness and strength
- resistant to liquids and mechanical damage
- made-to-measure worktops
- long service life

Granite kitchen worktops are available in the following sizes:

*Width: 50-1225 mm*

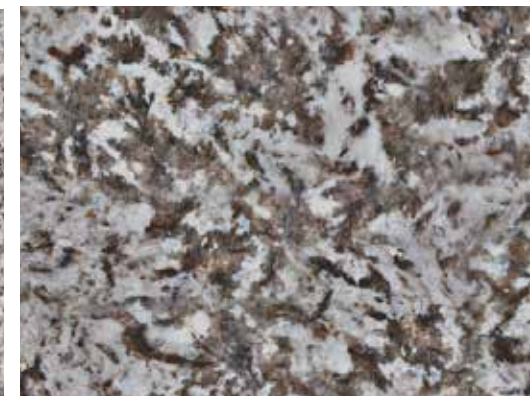
*Length: 150-3000 mm*

Measurement and installation of kitchen worktops:

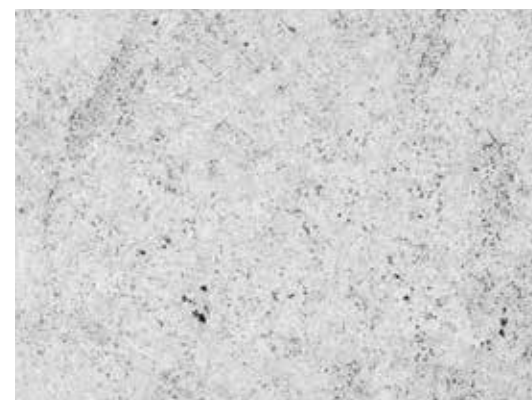
- precise measurement of worktops and back panels
- delivery to the place of installation
- professional installation



**Bianco Sardo - G-001**  
30mm



**Glacial Blue - lesk - GS-306**  
30mm



**Colonial White - GS-302**  
20mm, 40mm



**Ice Blue - GS-303**  
20mm, 40mm



**Rio Black - lesk - GS-102**  
30mm



**Dia Black - lesk - GS-101**  
30 mm



**Nero Inpala - G-002**  
30mm

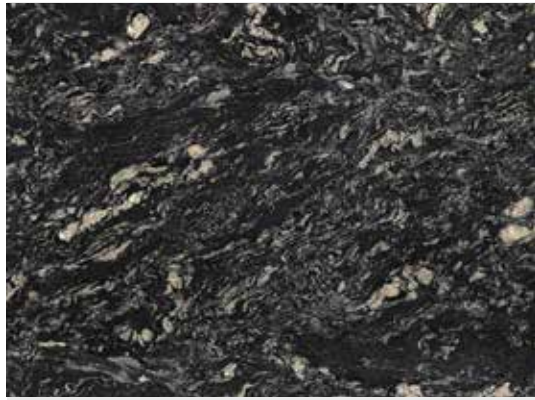


**Nero Assoluto - G-003**  
30mm

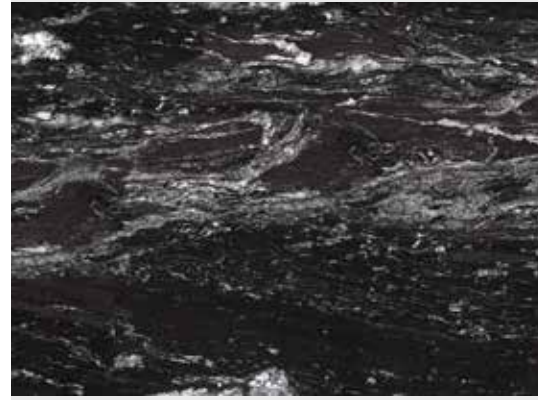


**Star Galaxy - G-004**  
30mm





**Indian Black - GS-301**  
20mm, 40mm



**Black Beauty - GS-304**  
20mm, 40mm

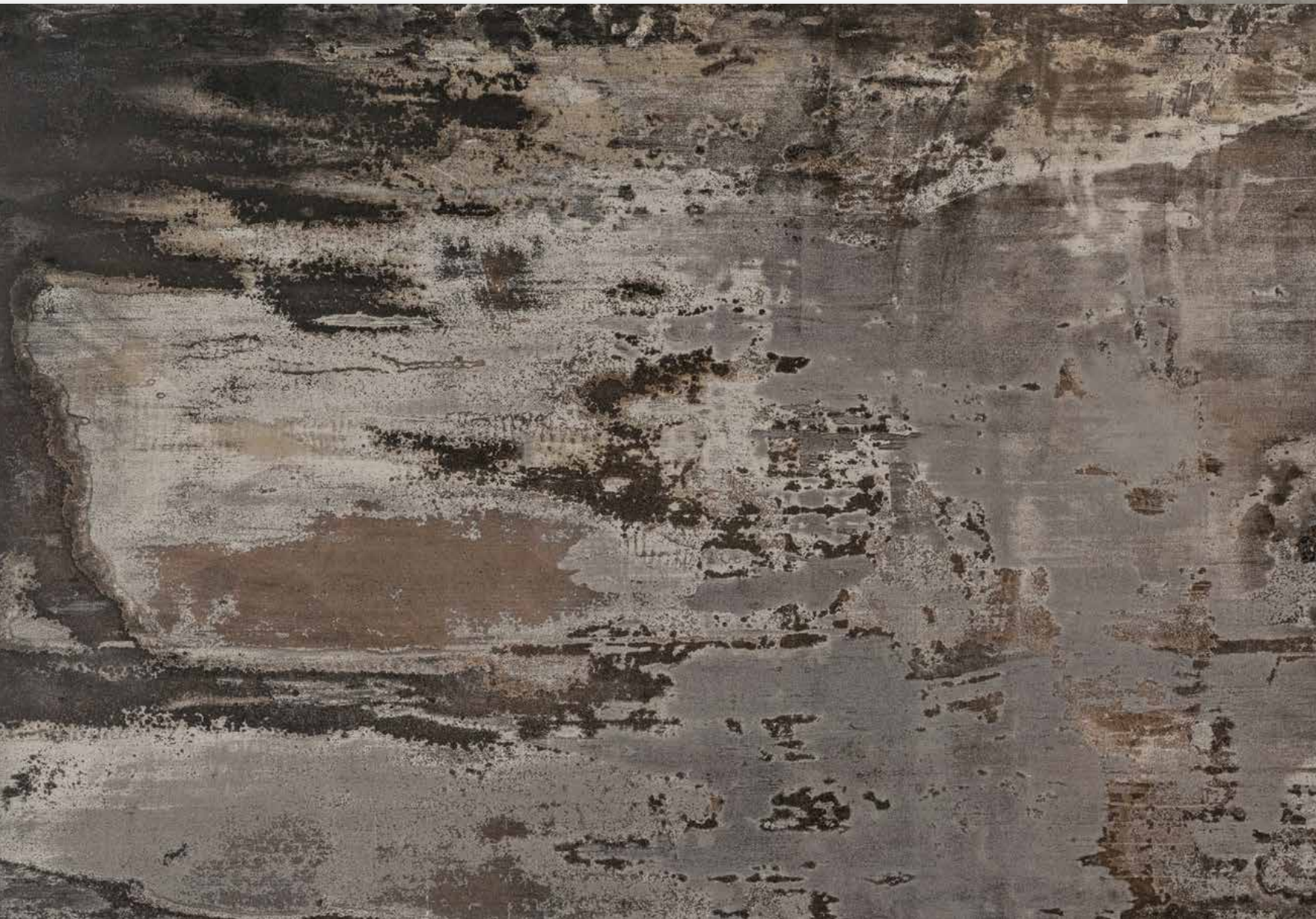


**Sensa Orinoco - GS-305**  
20mm, 40mm





# CERAMIC







## Ceramic worktops

Ceramics are one of the newest materials for the manufacture of kitchen worktops. Ceramic is a highly sophisticated mixture of natural materials, glass, and porcelain. Production takes place through the simulation of natural geological processes, conditions that produce high pressure and high temperatures for thousands of years. However, the man-made recreations of these processes are adapted in such a way that the final product meets both aesthetic and practical needs of modern households.

Advantages:

- high resistance to physical damage
- high resistance to liquids
- high resistance to UV radiation. It does not lose its colour.
- excellent resistance to temperatures up to 400 °C
- resistant to low temperatures
- a “maintenance-free” material

Ceramic kitchen worktops are available in the following sizes:

*Width: 50–1225 mm*

*Length: 150–3000 mm*

Measurement and installation of kitchen worktops:

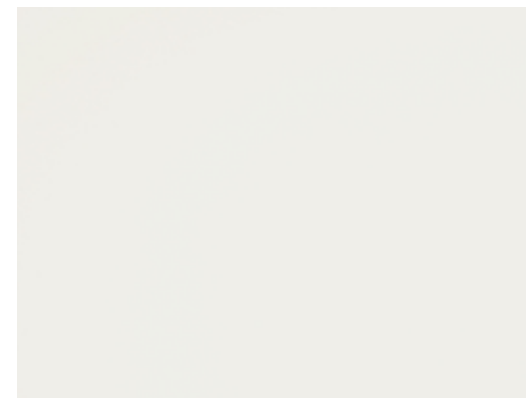
- precise measurement of worktops and back panels
- delivery to the place of installation
- professional installation



**Aura 15**  
20mm



**Entzo - DS-003**  
20mm



**Halo**  
20mm



**Vera - DS-005**  
20mm



**Keon - DS-001**  
20mm



**Korus**  
20mm



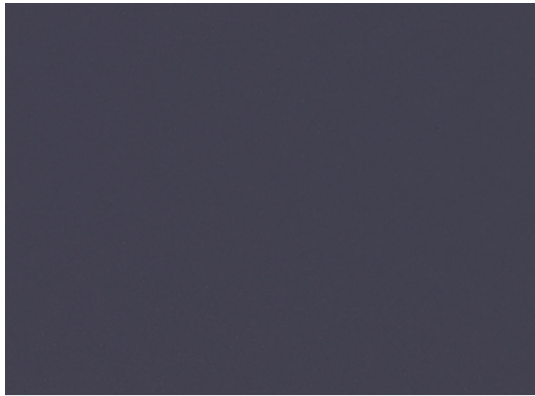
**Strato**  
20mm



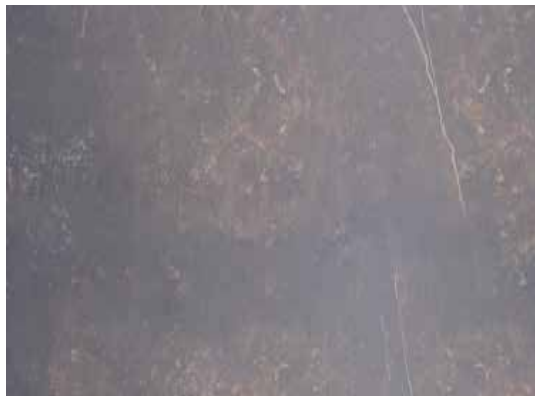
**Galema**  
20mm



**Domoos - DS-010**  
20mm



**Spectra - DS-009**  
20mm



**Kelya - DS-002**  
20mm



**Tritium**  
20mm



# SINKS AND WASHBASINS



*FRANKE  
BLANCO  
BLANCO SILGRANIT  
DESK - FORM*

# FRANKE



**FRA-L01-000**  
Neptun NEX611 - left-hand drain  
Min. width of mounting box: 500mm



**FRA-R01-000**  
Neptun NEX611 - right-hand drain  
Min. width of mounting box: 500mm



**FRA-U11-000**  
Planar PPX210-58  
Min. width of mounting box: 600mm



**FRA-U12-000**  
Planar PPX210-78  
Min. width of mounting box: 800mm



**FRA-L13-000**  
Planar PPX211 - left-hand drain  
Min. width of mounting box: 600mm



**FRA-R13-000**  
Planar PPX211 - right-hand drain  
Min. width of mounting box: 600mm



**FRA-R14-000**  
Aquatik AQX624 - left-hand drain  
Min. width of mounting box: 800mm



**FRA-L15-000**  
Aquatik AQX654 - left-hand drain  
Min. width of mounting box: 600mm



**FRA-R15-000**  
Aquatik AQX654 - right-hand drain  
Min. width of mounting box: 600mm



**FRA-U16-000**  
Compact nova CNX660  
Min. width of mounting box: 600mm



**FRA-L17-000**  
Neptun NPX611 - left-hand drain  
Min. width of mounting box: 400mm



**FRA-P17-000**  
Neptun NPX611 - right-hand drain  
Min. width of mounting box: 400mm



**FRA-U18-000**  
GAX 110-45  
Min. width of mounting box: 600mm



# BLANCO



**BLA-U11-000**  
Dana IF 514646  
Min. width of mounting box: 600mm

## BLANCO SILGRANIT



**BLA-L11-000 - Antracit**  
Nova 6S - 935x500 - right-hand drain  
Min. width of mounting box: 600mm



**BLA-R11-000 - Antracit**  
Nova 6S - 935x500 - left-hand drain  
Min. width of mounting box: 600mm



**BLA-L12-000 - Antracit**  
Nova 6S - 935x500 - right-hand drain  
Min. width of mounting box: 600mm



**BLA-R12-000 - Alumet**  
Nova 6S - 935x500 - left-hand drain  
Min. width of mounting box: 600mm



**BLA-U13-000 - Antracit**  
Dalago 6 - 615x510  
Min. width of mounting box: 800mm



**BLA-U14-000 - Alumet**  
Dalago 6 - 615x510  
Min. width of mounting box: 800mm



**BLA-L15-000 - Antracit**  
Nova 6 - 615x500 - big on left side  
Min. width of mounting box: 800mm



**BLA-R15-000 - Antracit**  
Nova 6 - 615x500 - big on right side  
Min. width of mounting box: 800mm



**BLA-L16-000 - Alumet**  
Nova 6 - 615x500 - big on left side  
Min. width of mounting box: 800mm



**BLA-R16-000 - Alumet**  
Nova 6 - 615x500 - big on right side  
Min. width of mounting box: 800mm

# BLANCO SILGRANIT



**BLA-L17-000 - Antracit**  
Zenar XL 6S - 100x510 - right-hand drain  
Min. width of mounting box: 800mm



**BLA-R17-000 - Antracit**  
Zenar XL 6S - 100x510 - left-hand drain  
Min. width of mounting box: 800mm



**BLA-L18-000 - Alumat**  
Zenar XL 6S - 100x510 - right-hand drain  
Min. width of mounting box: 800mm



**BLA-R18-000 - Alumat**  
Zenar XL 6S - 100x510 - left-hand drain  
Min. width of mounting box: 800mm



**BLA-L22-000 - White**  
Zenar XL 6S - 100x510 - right-hand drain  
Min. width of mounting box: 800mm



**BLA-R22-000 - White**  
Zenar XL 6S - 100x510 - left-hand drain  
Min. width of mounting box: 800mm



**BLA-L19-000 - White**  
Nova 6S - 935x500 - right-hand drain  
Min. width of mounting box: 800mm



**BLA-R19-000 - Antracit**  
Nova 6S - 935x500 - left-hand drain  
Min. width of mounting box: 800mm



# DESK - FORM



**DFS-U01-000**  
ET11 – 1160x500x200  
Min. width of mounting box: 800mm



**DFS-U02-000**  
ET03 – 1000x490x205  
Min. width of mounting box: 600mm



**DFS-U03-000**  
ET01 – 1115x500x200  
Min. width of mounting box: 800mm



**DFS-U04-000**  
ET34 – 790x480  
Min. width of mounting box: 800mm



**DFS-U05-000**  
N51 Round  
Min. width of mounting box: 600mm



**DFS-U06-000**  
Square – 540x440  
Min. width of mounting box: 600mm



**DFS-U07-000**  
Square – 780x480  
Min. width of mounting box: 800mm



**DFS-U09-003**  
SR1001  
Min. width of mounting box: 400mm



**DFS-U09-004**  
SR1007  
Min. width of mounting box: 600mm



**DFS-U10-000**  
HÄLLVIKEN 1 boule  
Min. width of mounting box: 600mm



**DFS-U11-000**  
HÄLLVIKEN 1½ left-hand drain  
Min. width of mounting box: 600mm



**DFS-U12-000**  
NORRSJÖN 1 boule 54x44  
Min. width of mounting box: 600mm